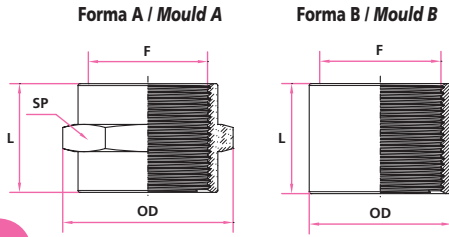


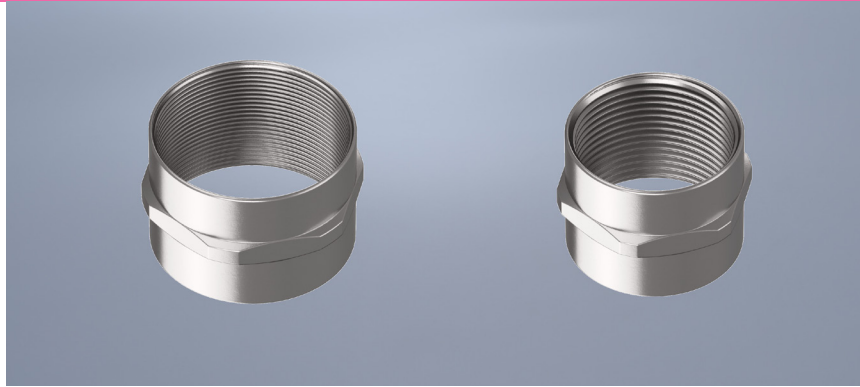
# MN

## Manicotti Coupling sleeves



**MATERIALE:**  
OT/Brass = ottone nichelato  
FE/Steel = acciaio zincato

**MATERIAL:**  
OT/Brass = brass nickel-plated  
FE/Steel = galvanized steel



CE

CE

### Applicazione Application



### Certificazioni Approvals

#### MN - Manicotti di giunzione filettati

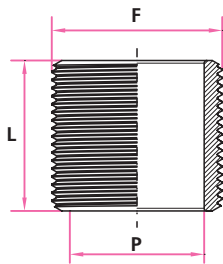
Codice	F filetto GAS	L mm	OD mm	SP mm	Codice	F filetto ISO Metrico	L mm	OD mm	SP mm	Codice	F filetto PG	L mm	OD mm	SP mm	Forma	Materiale	Confezione standard
MN1E	1/4"	15	17	15	MNM16E	M16x1,5	18	22	19	MN01	9	18	22	19	A	OT/Brass	20
MN2E	3/8"	18	22	19						MN02	11	22	25,5	22	A	OT/Brass	20
MN3E	1/2"	22	27,5	24	MNM20E	M20x1,5	22	25,4	22	MN03	13,5	22	27,5	24	A	OT/Brass	20
MN4E	3/4"	24	34,5	30	MNM25E	M25x1,5	24	32	28	MN04	16	24	30	26	A	OT/Brass	20
MN5E	1"	30	44	38	MNM32E	M32x1,5	30	40,5	35	MN05	21	24	38	33	A	OT/Brass	10
MN6E	1" 1/4	37	49,5	45	MNM40E	M40x1,5	37	49,5	45	MN06	29	30	48,5	42	A	OT/Brass	10
					MNM50E	M50x1,5	37	56	52						A	OT/Brass	5
										MN07	36	34	55	50	A	OT/Brass	5
										MN08	42	35	64	58	A	OT/Brass	5
										MN09	48	45	70	64	A	OT/Brass	5
REF. Part N.	F GAS thread	L mm	OD mm	SP mm	REF. Part N.	F ISO Metric thread	L mm	OD mm	SP mm	REF. Part N.	F PG thread	L mm	OD mm	SP mm	Mould	Material	Packing unit

MN - All thread coupling sleeves



# NG-NM-NP

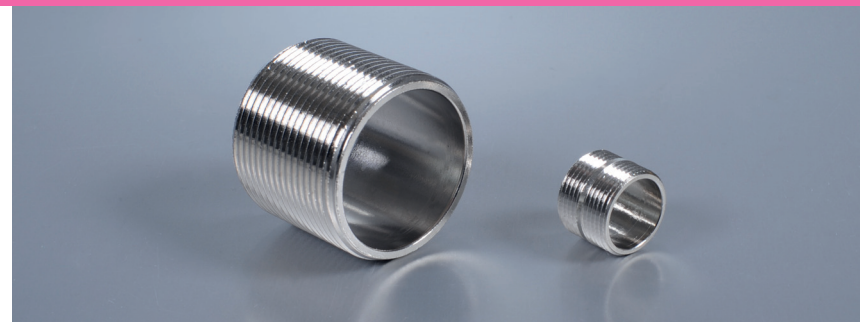
## Nippli Nipples



### Applicazione Application



### Certificazioni Approvals



CE

CE

#### N - Nippli tutto filetto

Codice	F filetto GAS	L mm	P mm	Materiale	Codice	F filetto ISO Metrico	L mm	P mm	Confezione standard	Codice	F filetto PG	L mm	P mm	Materiale	Confez. standard
NG02	1/4"	19	9,5	OT/Brass	NM16	M16x1,5	22	12	20	NP001	7	16	9	OT/Brass	20
NG03	3/8"	22	13	OT/Brass	NM20	M20x1,5	22	15	20	NP002	9	17	12	OT/Brass	20
NG04	1/2"	22	15	OT/Brass	NM25	M25x1,5	25	21	20	NP003	11	17	15	OT/Brass	20
NG05	3/4"	25	21	OT/Brass	NM32	M32x1,5	28	27	10	NP004	13,5	17	16	OT/Brass	20
NG06	1"	28	26,8	OT/Brass	NM40	M40x1,5	38	35	5	NP005	16	17	18	OT/Brass	20
NG07	1" 1/4	38	35	OT/Brass	NM50	M50x1,5	40	45	5	NP006	21	21	24	OT/Brass	10
NG08	1" 1/2	40	41	OT/Brass					2	NP007	29	23	32	OT/Brass	10
NG10	2"	44	53	OT/Brass						NP008	36	25	41	OT/Brass	5
										NP009	42	28	49	OT/Brass	2
										NP010	48	31	54	OT/Brass	2
REF. Part N.	F GAS thread	L mm	P mm	Material	REF. Part N.	F ISO Metric thread	L mm	P mm	Packing unit	REF. Part N.	F PG thread	L mm	P mm	Material	Packing unit

N - All thread nipples